

NEEDLE CAM FOLLOWERS STUD TYPE KR.. AND KR..EE



NEW RANGE !
NOW WITH CAGE

Cam followers are designed to run directly on surfaces such as cams, ramps and slide ways of linear motion systems. In order to meet the operating conditions of heavy radial loads accompanied by repeated shocks the components have the followings features:

- Heavy section outer ring of high strength steel hardened to 58 - 62 HRC;
- No oil hole or lubrication groove on the outer ring, thus preventing the introduction of impurities and metal particles into the bearing to avoid deformation of the railways;
- Convex outer ring tolerating out-of-parallelism of contact surfaces; cam followers with cylindrical outer ring are also available (suffix X);
- Oil hole provided under the needles enable lubricant replenishment through the shaft;
- Cage-guided cam followers permit operation at high speed.

Concentric cam followers

KR ..

KR .. EE sealed both sides



KR ..

KR .. EE

Eccentric cam followers

KRE ..

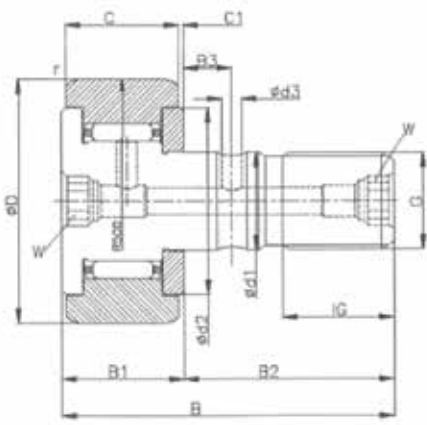
KRE .. EE sealed both sides

Outside diameter mm	Code	Weight approx. g	Dimensions										
			D	d ₁ h7	B	B1 max	B ₂	B ₃	C	C ₁	r min	d ₂	d ₃
mm													
16	KR16*	20	16	6	28	12.2	16	-	11	0.6	0.15	12.5	-
	KR16EE*	20	16	6	28	12.2	16	-	11	0.6	0.15	12.5	-
19	KR19*	32	19	8	32	12.2	20	-	11	0.6	0.15	15	-
	KR19EE*	32	19	8	32	12.2	20	-	11	0.6	0.15	15	-
22	KR22	47	22	10	36	13.2	23	-	12	0.6	0.3	17.5	-
	KR22EE	47	22	10	36	13.2	23	-	12	0.6	0.3	17.5	-
26	KR26	62	26	10	36	13.2	23	-	12	0.6	0.3	17.5	-
	KR26EE	62	26	10	36	13.2	23	-	12	0.6	0.3	17.5	-
30	KR30	93	30	12	40	15.2	25	6	14	0.6	0.6	23	3
	KR30EE	93	30	12	40	15.2	25	6	14	0.6	0.6	23	3
32	KR32	104	32	12	40	15.2	25	6	14	0.6	0.6	23	3
	KR32EE	104	32	12	40	15.2	25	6	14	0.6	0.6	23	3
35	KR35	177	35	16	52	19.6	32.5	8	18	0.8	0.6	27.6	3
	KR35EE	177	35	16	52	19.6	32.5	8	18	0.8	0.6	27.6	3
40	KR40	255	40	18	58	21.6	36.5	8	20	0.8	1	31.5	3
	KR40EE	255	40	18	58	21.6	36.5	8	20	0.8	1	31.5	3
47	KR47	400	47	20	66	25.6	40.5	9	24	0.8	1	36.5	4
	KR47EE	400	47	20	66	25.6	40.5	9	24	0.8	1	36.5	4
52	KR52	473	52	20	66	25.6	40.5	9	24	0.8	1	36.5	4
	KR52EE	473	52	20	66	25.6	40.5	9	24	0.8	1	36.5	4
62	KR62	798	62	24	80	30.6	49.5	11	29	0.8	1	44	4
	KR62EE	798	62	24	80	30.6	49.5	11	29	0.8	1	44	4
72	KR72	1038	72	24	80	30.6	49.5	11	29	0.8	1.1	44	4
	KR72EE	1038	72	24	80	30.6	49.5	11	29	0.8	1.1	44	4
80	KR80	1665	80	30	100	37	63	15	35	1	1.1	53	4
	KR80EE	1665	80	30	100	37	63	15	35	1	1.1	53	4
90	KR90	2032	90	30	100	37	63	15	35	1	1.1	53	4
	KR90EE	2032	90	30	100	37	63	15	35	1	1.1	53	4

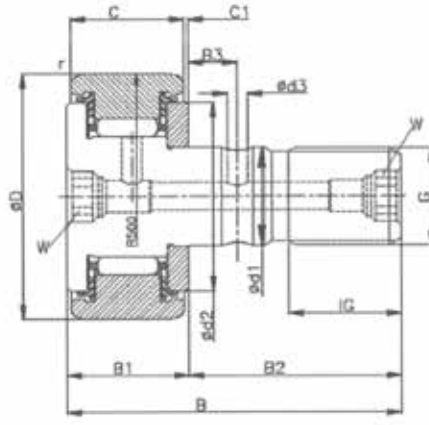
⁽¹⁾ Nominal dimension for hexagonal socket.

⁽²⁾ When a cam follower moves on a flat raceway, the load distribution on rolling elements changes due to the elastic deformation of the outer ring. For such operating conditions, the load capacities C_w and C_o should be used.

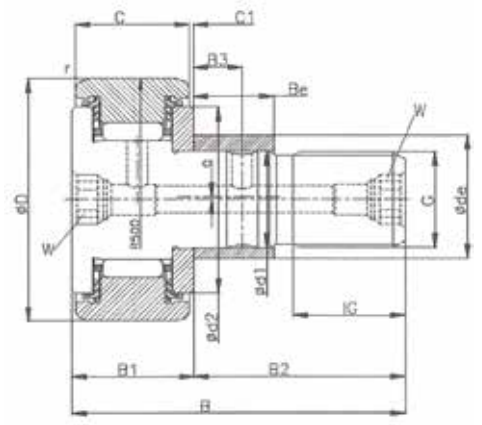
⁽³⁾ Limit speed with grease lubrication.



KR ..



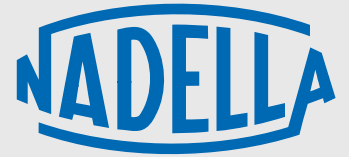
KR .. EE



Eccentric KRE .. EE

G	IG	Eccentric			W ⁽¹⁾	Nut tightening torque M _A	Load capacities ⁽²⁾		Fatigue limit load F	Speed limit ⁽³⁾
		d _e h9	B _e	e			Dynamic c _w	Static c ₀		
mm						Nm	N		r.p.m.	
M6x1	8	9	7	0.5	-	3	3150	3350	450	14000
M6x1	8	9	7	0.5	-	3	3150	3350	450	14000
M8x1.25	10	11	9	0.5	-	8	3500	4000	540	11000
M8x1.25	10	11	9	0.5	-	8	3500	4000	540	11000
M10x1	12	13	10	0.5	5	15	4550	5300	730	8000
M10x1	12	13	10	0.5	5	15	4550	5300	730	8000
M10x1	12	13	10	0.5	5	15	5100	6400	840	8000
M10x1	12	13	10	0.5	5	15	5100	6400	840	8000
M12x1.5	13	15	11	0.5	6	22	6800	8600	1220	5500
M12x1.5	13	15	11	0.5	6	22	6800	8600	1220	5500
M12x1.5	13	15	11	0.5	6	22	7100	9200	1290	5500
M12x1.5	13	15	11	0.5	6	22	7100	9200	1290	5500
M16x1.5	17	20	14	1	8	58	9700	14300	1830	3600
M16x1.5	17	20	14	1	8	58	9700	14300	1830	3600
M18x1.5	19	22	16	1	8	87	10900	15800	2090	2900
M18x1.5	19	22	16	1	8	87	10900	15800	2090	2900
M20x1.5	21	24	18	1	10	120	15400	26000	3400	2400
M20x1.5	21	24	18	1	10	120	15400	26000	3400	2400
M20x1.5	21	24	18	1	10	120	16600	29000	3800	2400
M20x1.5	21	24	18	1	10	120	16600	29000	3800	2400
M24x1.5	25	28	22	1	14	220	26000	48000	6800	1900
M24x1.5	25	28	22	1	14	220	26000	48000	6800	1900
M24x1.5	25	28	22	1	14	220	28000	53000	7200	1900
M24x1.5	25	28	22	1	14	220	28000	53000	7200	1900
M30x1.5	32	35	29	1.5	14	450	38500	77000	11000	1300
M30x1.5	32	35	29	1.5	14	450	38500	77000	11000	1300
M30x1.5	32	35	29	1.5	14	450	40500	83000	11700	1300
M30x1.5	32	35	29	1.5	14	450	40500	83000	11700	1300

* Diameters 16 and 19 are supplied with screw driver slot as standard feature, however these can also be supplied with hexagonal socket if required.



NADELLA S.r.l.
Italy
Via Melette, 16
20128 Milano

Tel.: +39 02 27 093
Fax: +39 02 25 764 79
customer.service@nadella.it

www.nadella.it

NADELLA GmbH
Germany
Rudolf-Diesel-Str. 28
71154 Nufringen

Tel.: +49 7032 9540-0
Fax: +49 7032 9540-25
info@nadella.de

www.nadella.de

NADELLA Linear Shanghai Co. Ltd.
China
Room D314, NO.245 Xinjunhuan
Road - 201114 Minhang Shanghai

Tel.: +86 21 5068 3835
Fax: +86 21 5038 7725
info@nadella.cn.com

www.nadella.cn.com

NADELLA Inc.
USA
14115 - 63 Way North
Clearwater - Florida 33760-3621

Toll free: + 1 844-537-0330
Fax: + 1 844-537-0331
info@nadella.com

www.nadella.com

